



All Creatures  
Great & Small

For centuries, the animal kingdom has served as a rich source of inspiration in art. From their roles in agriculture and industry to the domestication of exotic species as pets, these early depictions reveal the evolving significance of animals within society and culture. Spanning the 20th and 21st centuries, our exhibition *All Creatures Great & Small* celebrates this enduring theme, showcasing a diverse representation across painting, collage, sculpture, and printed media. Each piece captures the distinct personalities and characteristics of its subjects, emphasising the deep emotional connection and companionship between humans and animals.

# All Creatures Great & Small

22 JULY – 15 AUGUST 2025

PORTLAND GALLERY

3 BENNET STREET | LONDON | SW1A 1RP

EMAIL: [art@portlandgallery.com](mailto:art@portlandgallery.com) TELEPHONE: 020 7493 1888

[www.portlandgallery.com](http://www.portlandgallery.com)

Cover: William Crosbie, *Munnie and Janette*, 1937, Oil on paper, 23 x 26 in / 58.5 x 66 cm



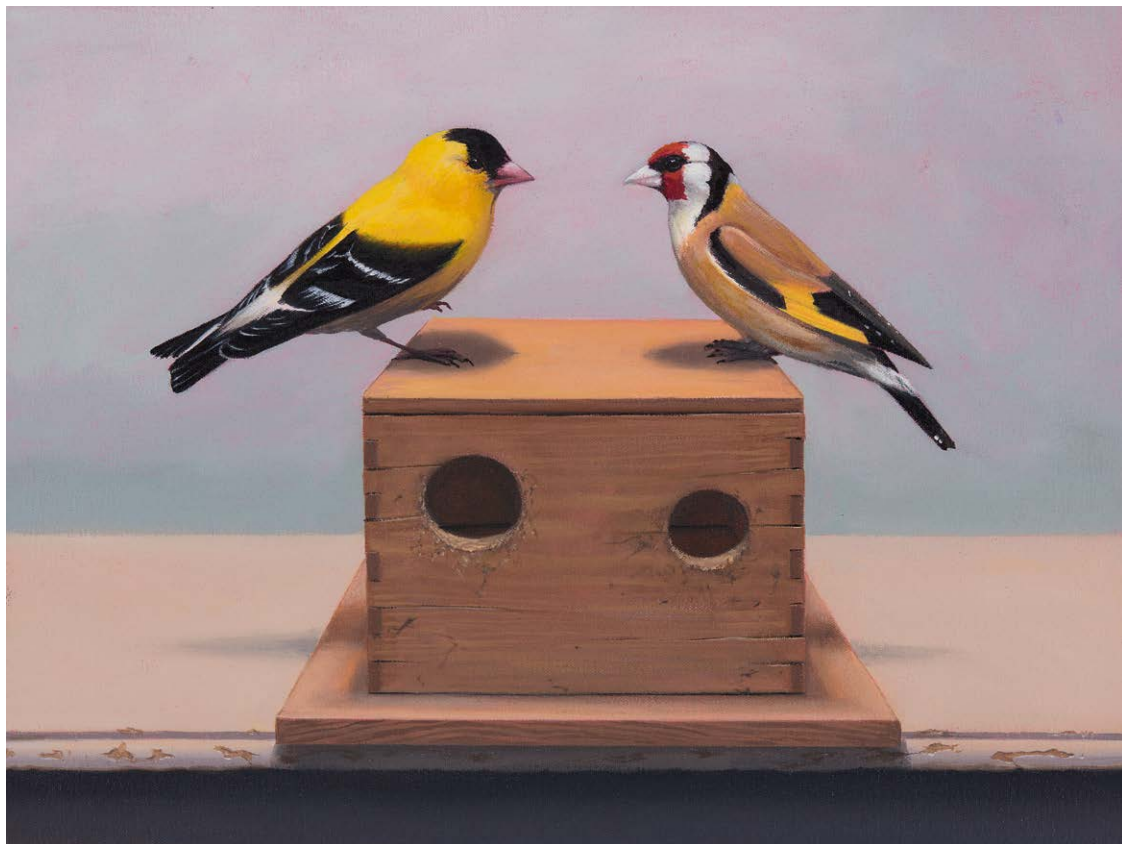


**James Lynch** (B. 1956)  
*Swallows Over the Flax*  
 Egg tempera on gesso panel  
 20 x 27 in / 51 x 68.5 cm



**James Lynch** (B. 1956)  
*Three Swallows, Horse Hill*  
 Egg tempera on gesso panel  
 20 x 27 in / 51 x 68.5 cm





**Gordon Mitchell** RSA (B. 1952)  
*Big American Cousin*  
 Oil on canvas  
 12 x 16 in / 30.5 x 40.5 cm



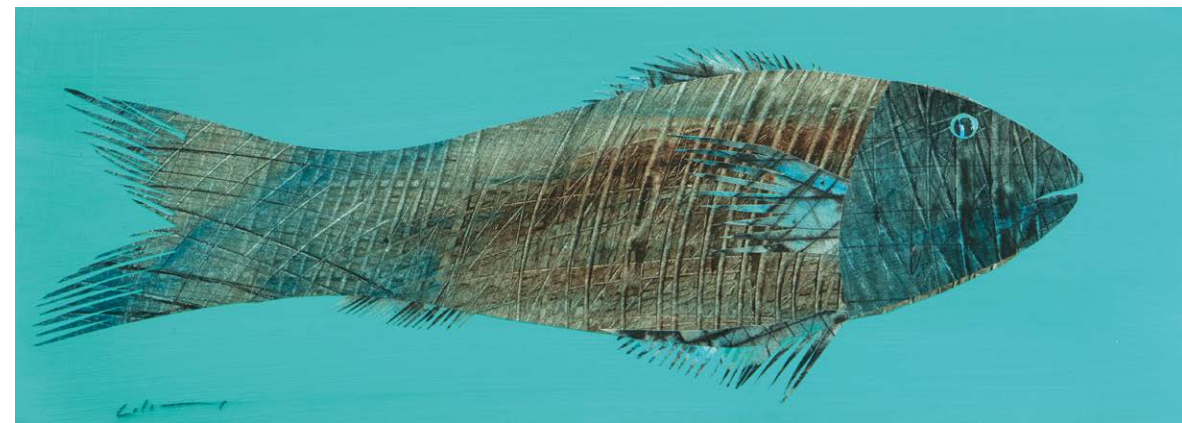
**Gordon Mitchell** RSA (B. 1952)  
*Cocksure*  
 Oil on canvas  
 20 x 24 in / 51 x 61 cm



**Marzia Colonna** (B. 1951)  
*The Owl and the Moon*  
 Collage  
 11  $\frac{3}{4}$  x 8  $\frac{1}{2}$  in / 30 x 22 cm

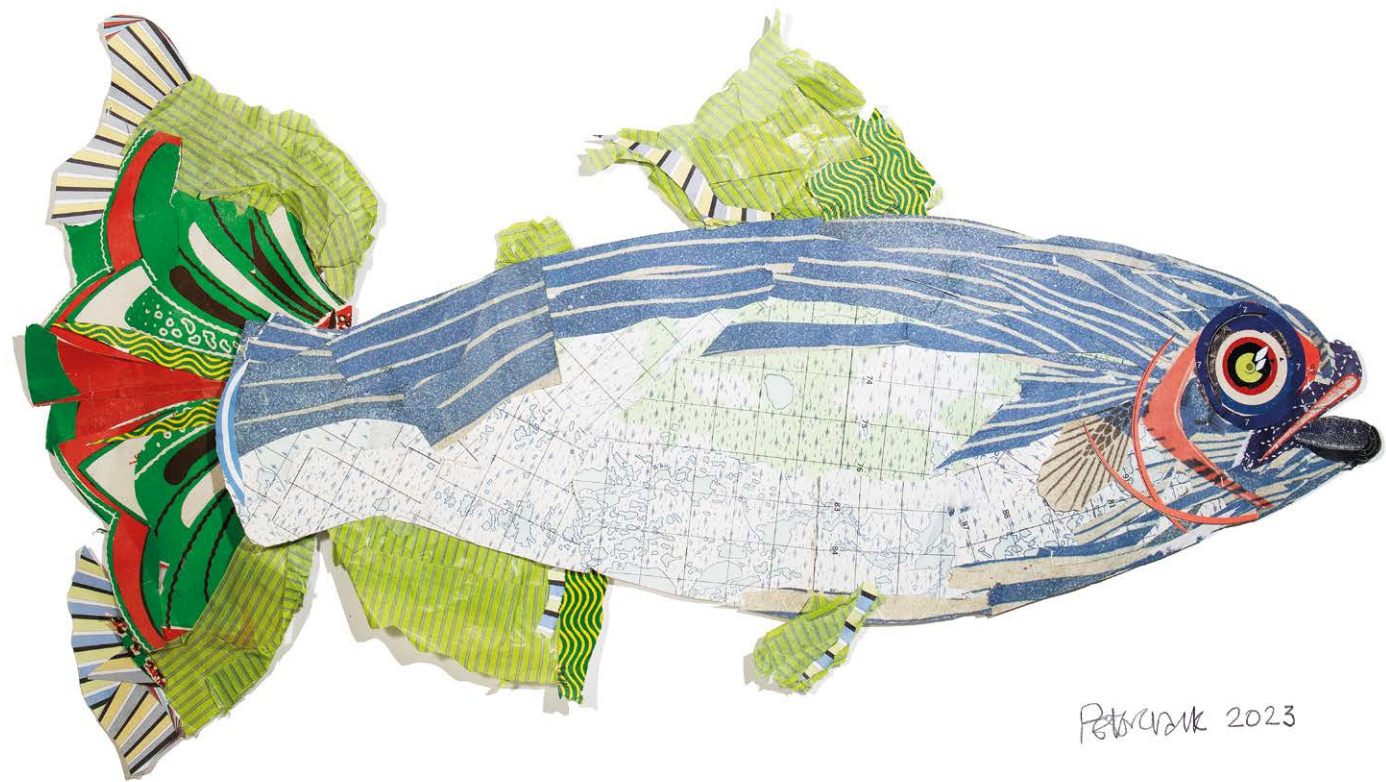


**Marzia Colonna** (B. 1951)  
*Fish on Turquoise I*  
 Collage  
 8 x 21  $\frac{1}{2}$  in / 20 x 55 cm



**Marzia Colonna** (B. 1951)  
*Fish on Turquoise II*  
 Collage  
 8 x 21  $\frac{1}{2}$  in / 20 x 55 cm





**Peter Clark** (B. 1944)  
*Eastward Bound*  
 Collage  
 15 x 30 in / 38 x 76 cm



**Peter Clark** (B. 1944)  
*Labrabloodle*  
 Collage  
 26 x 26 in / 66 x 66 cm





**Elaine Pamphilon** (B. 1948)  
*Mr Theobald's China Dogs*  
 Mixed media on wooden panel  
 11 ¾ x 11 ¾ in / 30 x 30 cm



**Elaine Pamphilon** (B. 1948)  
*Lily and Myrtle, Garden Cats*  
 Mixed media on linen  
 15 ¾ x 19 ¾ in / 40 x 50 cm





**Nick Botting** (B. 1963)  
*Daffodils, Black Cat and Gluggle Jug*  
 Oil on canvas  
 22 x 16 in / 56 x 40.5 cm



**Nick Botting** (B. 1963)  
*Emma, HM Queen Elizabeth II's riding pony,  
 on her last public appearance*  
 Oil on canvas  
 14 x 16 in / 35.5 x 40.5 cm

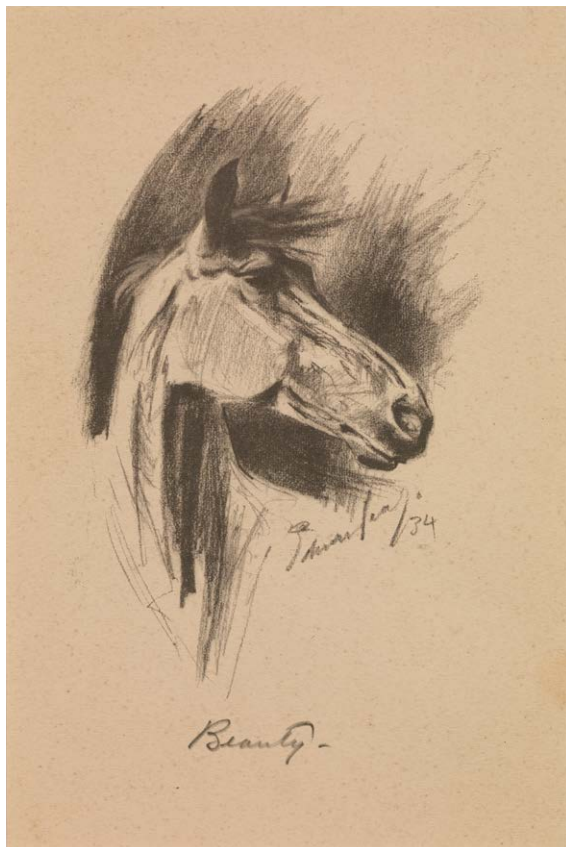




**Jess Wallace** (B. 1967)  
*Samoyed on Wall, George*  
 Bronze with a dark brown patina, edition 1/8  
 9 x 11 1/8 x 6 3/8 in / 23 x 28.5 x 16 cm



**Jess Wallace** (B. 1967)  
*Four Horses Fleeing (Joey, Java, Trigger and Sid)*  
 Bronze with a green-brown patina, edition 1/6  
 7 1/4 x 17 1/2 x 9 1/2 in / 18 x 44 x 24 cm



**Edward Seago** RBA ARWS RWS (1910-1974)

*Beauty*, 1934

Pencil on buff paper

8 5/8 x 5 3/4 in / 22 x 14.5 cm



**Edward Seago** RBA ARWS RWS (1910-1974)

*Derry Watered the Horses*, 1934

Pencil on buff paper

5 3/4 x 8 5/8 in / 14.5 x 22 cm



**Edward Seago** RBA ARWS RWS (1910-1974)

*Cow in a field*

Oil on panel

6 1/4 x 9 3/8 in / 16 x 24 cm



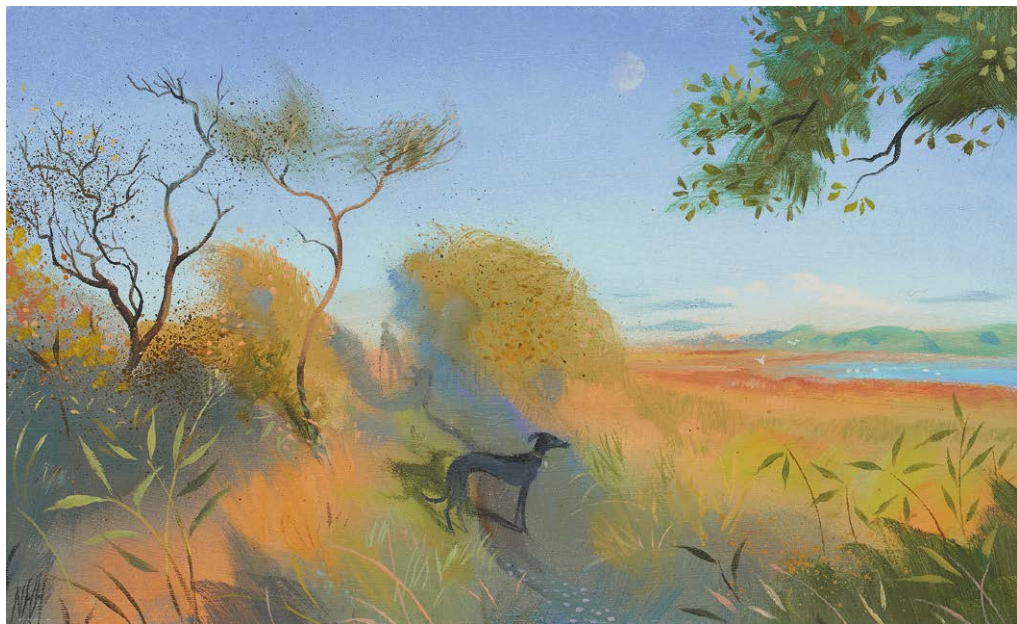


**Romy Elliott** (B. 1990)  
*When the water is a bit cold*  
 Acrylic on canvas  
 19 ¾ x 15 ¾ in / 50 x 40 cm



**Romy Elliott** (B. 1990)  
*Eleanor's dog*  
 Acrylic on canvas  
 15 ¾ x 19 ¾ in / 40 x 50 cm





**Nicholas Hely Hutchinson** (B. 1955)  
*Morning Light on the Angel Marshes*  
 Oil on board  
 5 ½ x 9 in / 14 x 23 cm

**Nicholas Hely Hutchinson** (B. 1955)  
*Morvah*  
 Oil on canvas  
 20 x 24 in / 51 x 61 cm







**Christopher Marvell** (B. 1964)

*Lying dog*

Bronze with a brown patina, edition III

15 ¾ x 30 ¾ x 15 in / 40 x 78 x 38 cm



**Christopher Marvell** (B. 1964)

*Flat Winged Owl*

Bronze with a grey patina, edition V

17 ¾ x 19 x 26 ½ in / 45 x 48 x 67 cm





**Mary Fedden** OBE RA RWA (1915-2012)  
*Red Throated Diver*, 2001  
 Watercolour and gouache on paper  
 11 x 16 in / 28 x 40 cm



**Mary Fedden** OBE RA RWA (1915-2012)  
*Mother and Child*, 1988  
 Watercolour on paper  
 8 ½ x 6 ½ in / 21.5 x 16.5 cm



**Mary Fedden** OBE RA RWA (1915-2012)  
*Tabby*, 1983  
 Oil on board  
 5 ¼ x 8 in / 13.5 x 20.5 cm





**PJ Crook** MBE (B. 1945)  
*The Infant Journeying With The Animals*  
 Tinted gesso on wood  
 17 x 19 in / 43 x 48.5 cm

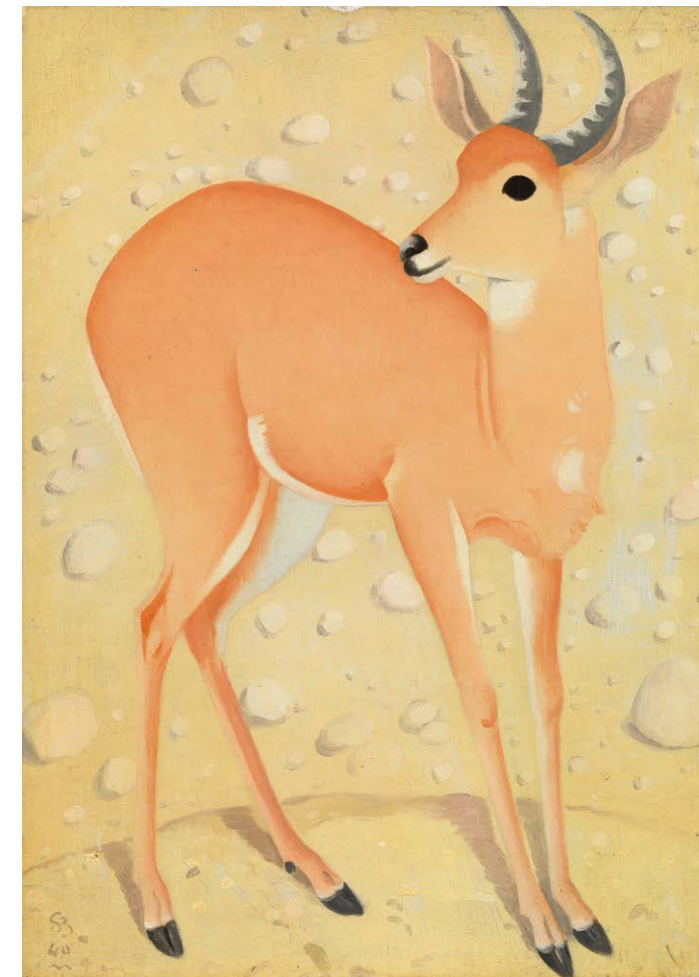


**PJ Crook** MBE (B. 1945)  
*Encouraging The Zebra*  
 Tinted gesso on wood  
 17 x 19 in / 43 x 48.5 cm





**Simon Bussy** (1870-1954)  
*Red Panda*  
 Pastel on paper  
 9 ¼ x 14 ¼ in / 23.5 x 36 cm



**Simon Bussy** (1870-1954)  
*Antelope*, 1940  
 Oil on canvas  
 12 ¾ x 9 ¼ in / 32.5 x 23.5 cm



**William Crosbie** RSA (1915-1999)  
*Munnie and Janette*, 1937  
Oil on paper  
23 x 26 in / 58.5 x 66 cm





**Robert Clatworthy** RA (1928-2015)

*Cat*, 1954

Bronze with a black patina, edition AP 0/0

17 ½ x 23 ¼ x 7 ½ in / 44.5 x 59 x 19 cm







**David Spiller** (1942-2018)  
*Here Comes the Sun*, 1999  
 Acrylic and pencil on canvas  
 34 x 34 in / 86 x 86 cm



**David Spiller** (1942-2018)  
*Love Is*, 1997  
 Acrylic and pencil on canvas  
 64 1/8 x 102 3/4 in / 163 x 261 cm





**Tom Wood** (b. 1955)  
*Crab*  
Acrylic and collage on panel  
24 x 24 in / 61 x 61 cm



PORTLAND GALLERY