

# MARZIA COLONNA

## A SENSE OF WONDER





# MARZIA COLONNA

## A SENSE OF WONDER

20TH OCTOBER – 4TH NOVEMBER 2022

Monday – Friday

10am – 6pm

and by appointment

## PORTLAND GALLERY

3 BENNET STREET · LONDON SW1A 1RP

TELEPHONE 020 7493 1888 · EMAIL [art@portlandgallery.com](mailto:art@portlandgallery.com)

[www.portlandgallery.com](http://www.portlandgallery.com)

Front cover: *The Sea Beyond the Meadow* Collage 24 x 47 ins Catalogue no.12

## Q&A

**In this latest exhibition at the Portland Gallery, you are showing forty-eight new collages and five sculptures; looking back at early exhibitions, such as Metamorphosis at the Grosvenor Gallery in 1999, the majority of the work then was sculpture with a few drawings related to it. When did you start working with collage?**

I started using collage as a medium in 1987, soon after buying our first house in Dorset. I continued to work on sculpture large and small for public and private commissions and to satisfy my love for it, but gradually collage became more prominent. The move to Dorset had quite an impact on my work; I think the first thing that happened was a shift from an interest very much based on human relationship to a curiosity about the relationship between man and nature.

My sculptures, once male and female become at times metamorphic; for example in the large bronze, Earth and Sea, (now in a square in Krakow), the two figures have become part shore part sea. In Spring and Spring Again, showing in this exhibition, two figures have become plants unfurling and reaching for the light after a long winter.

Although at first I responded to the landscape around me through my sculpture, eventually I felt the need to acknowledge and register the colour and textures so insistently present on my walks and that is when I started working in collage.

**What are the benefits and challenges of working in collage?**

Collage is almost sculptural so it is familiar to me, I like the construction element of it and it's immediacy. The challenge is finding the balance between synthesis and detail and how to achieve this by just ripping and cutting paper.

**You have called this exhibition *A sense of Wonder*, why?**

Albert Einstein said:

*"He who can no longer pause to wonder and stand rapt in awe, is as good as dead."*

Well maybe not dead but dead to feeling and without feeling, I cannot create. A sense of wonder is the first and most essential tool in my artist box.



**Buffy's Cornus**

Collage  
48 x 32 ins  
Catalogue no.4



Brushes and Paints II  
Collage  
16 x 16 ins  
Catalogue no.25



Picasso's Bird  
Collage  
32 x 39 ins  
Catalogue no. 9



**Walk by the Cliffs**  
Collage  
8 x 8 ins  
Catalogue no.45



**Day Out on the Water**  
Collage  
8 x 8 ins  
Catalogue no.46



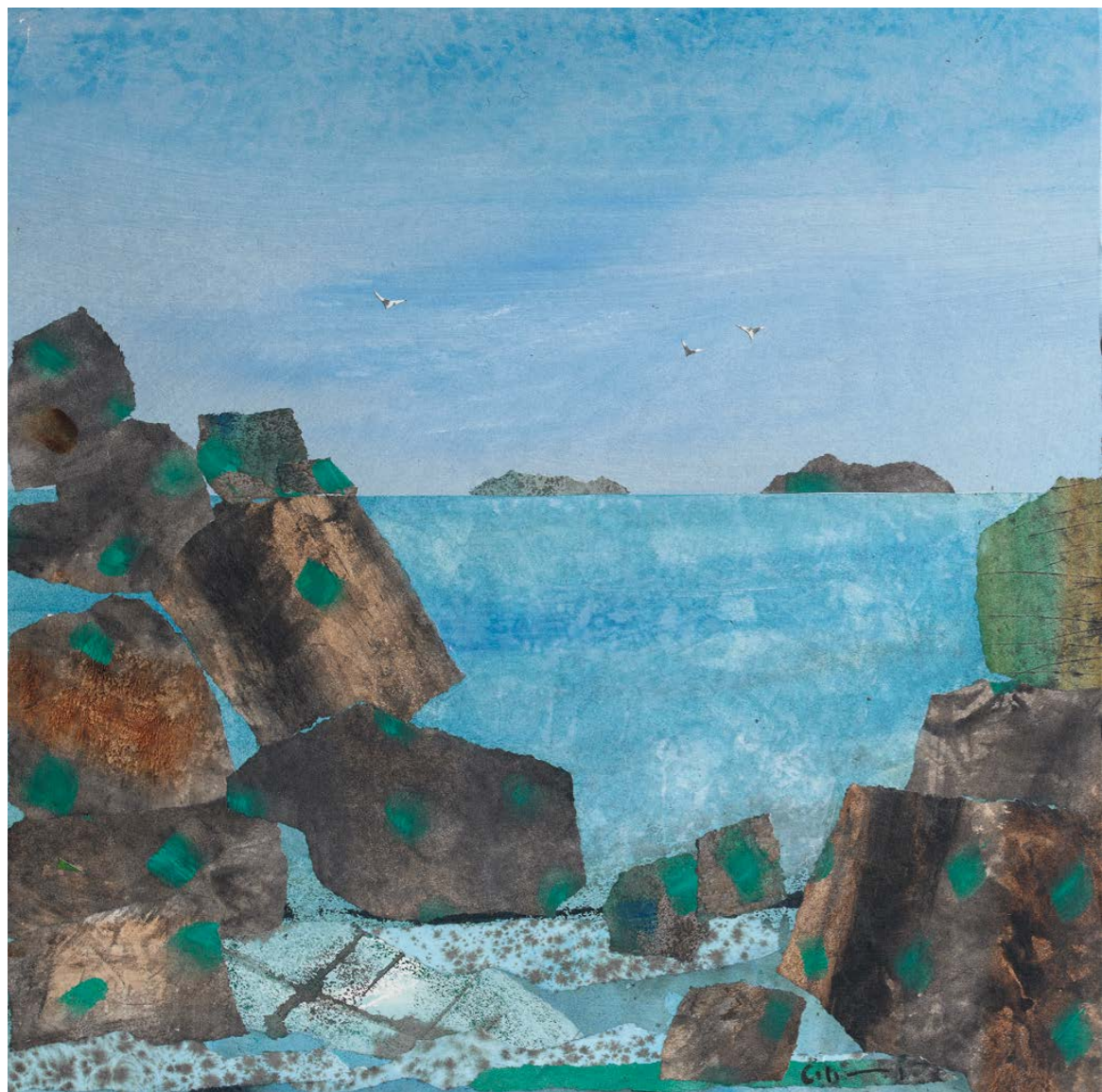
*Right:* **Sunflowers by the Sea**  
Collage  
40 x 39 ins  
Catalogue no.2



**The Return**  
Collage  
32 x 39 ins  
Catalogue no. 8



**October**  
Collage  
8 x 8 ins  
Catalogue no.44



**Light on the Sea**  
Collage  
17 x 17 ins  
Catalogue no.22



**Full Moon on the Rocks**  
Collage  
32 x 31 ins  
Catalogue no.15

**Light on the Water**  
Collage  
31 x 39 ins  
Catalogue no. 10







**Woods in May**  
Collage  
16 x 16 ins  
Catalogue no.24

*Right: The Box*  
Collage  
39 x 31 ins  
Catalogue no.11





**Two Sculptures in the Studio**

Collage  
16 x 16 ins  
Catalogue no.29

*Right:* **Spring Again**

Bronze. Edition of 9  
24 x 7 in x 7 ins  
Catalogue no.53





Navets

Oil on linen  
9 x 12 ins  
Catalogue no.39

Right: Iris and Pomegranates

Collage  
32 x 32 ins  
Catalogue no.14



**Night of the Fireflies**  
Collage  
32 x 40 ins  
Catalogue no.6





**Flowers and Two Quail Eggs**  
 Collage  
 9 x 12 ins  
 Catalogue no.41



**Cape Gooseberries**  
 Collage  
 9 x 12 ins  
 Catalogue no.36



**Love in the Mist**  
 Collage  
 9 x 12 ins  
 Catalogue no.35



**Squash**  
 Collage  
 9 x 12 ins  
 Catalogue no.40



Sweet Peas and Crocosmias  
Collage  
16 x 16 ins  
Catalogue no.27



Squash and Sunflower  
Collage  
24 x 24 ins  
Catalogue no.17



**Fish**

Bronze. Edition of 9  
18 in x 30 in x 11 ins  
Catalogue no.52



**Fish at Sunset**

Collage  
13 x 13 ins  
Catalogue no.33



**Two Mast Beauty**

Collage

8 x 8 ins

Catalogue no.43



**Storm at Sea**

Collage

32 x 48 ins

Catalogue no.3





**Poppies and Figs**

Collage  
8 x 8 ins

Catalogue no.49



**Brushes and Paints**

Collage  
9.5 x 9.5 ins

Catalogue no.42



**The Red Curtain**

Collage  
24 x 17 ins

Catalogue no.20

**A Sunny Day in the Studio**  
Collage  
40 x 48 ins  
Catalogue no.1





**Pomegranates**  
Collage  
9 x 12 ins  
Catalogue no.37



**The Fig**  
Collage  
9 x 12 ins  
Catalogue no.38



*Right:* **Late Flowering Viburnum**  
Collage  
40 x 32 ins  
Catalogue no.7



**Lilies and Poppies**  
Collage  
16 x 16 ins  
Catalogue no.26



**Artichokes and Fish**  
Collage  
16 x 16 ins  
Catalogue no.23



**Autumn**

Collage  
16 x 16 ins  
Catalogue no.30

## CATALOGUE

1	A Sunny Day in the Studio	Collage	40 x 48 ins	36	Cape Gooseberries	Collage	9 x 12 ins
2	Sunflowers by the Sea	Collage	40 x 39 ins	37	Pomegranates	Collage	9 x 12 ins
3	Storm at Sea	Collage	32 x 48 ins	38	The Fig	Collage	9 x 12 ins
4	Buffy's Cornus	Collage	48 x 32 ins	39	Navets	Collage	9 x 12 ins
5	Saturday's Catch	Collage	36 x 39 ins	40	Squash	Collage	9 x 12 ins
6	Night of the Fireflies	Collage	32 x 40 ins	41	Flowers and Two Quail Eggs	Collage	9 x 12 ins
7	Late Flowering Viburnum	Collage	40 x 32 ins	42	Brushes and Paints	Collage	10 x 10 ins
8	The Return	Collage	32 x 39 ins	43	Two Mast Beauty	Collage	8 x 8 ins
9	Picasso's Bird	Collage	32 x 39 ins	44	October	Collage	8 x 8 ins
10	Light on the Water	Collage	31 x 39 ins	45	Walk by the Cliffs	Collage	8 x 8 ins
11	The Box	Collage	39 x 31 ins	46	Day Out on the Water	Collage	8 x 8 ins
12	The Sea Beyond the Meadow	Collage	24 x 47 ins	47	Full Moon on the Sea	Collage	8 x 8 ins
13	Moon Rising	Collage	32 x 32 ins	48	May	Collage	8 x 8 ins
14	Iris and Pomegranates	Collage	32 x 32 ins	49	Poppies and Figs	Collage	8 x 8 ins
15	Full Moon on the Rocks	Collage	32 x 31 ins	50	Winged Figure	Bronze	107 x 18 x 25 ins
16	Two Sailing Boats	Collage	24 x 36 ins	51	Spring	Bronze	100 x 22 x 16 ins
17	Squash and Sunflower	Collage	24 x 24 ins	52	Fish	Bronze	18 x 30 x 11
18	Spring	Collage	24 x 24 ins	53	Spring Again	Bronze	23 x 7 x 7
19	Two Lobsters and a Ball of String	Collage	24 x 20 ins	54	Leda and the Swan	Bronze	14 x 14 x 13
20	The Red Curtain	Collage	24 x 17 ins				
21	Evening Light	Collage	16 x 24 ins				
22	Light on the Sea	Collage	17 x 17 ins				
23	Artichokes and Fish	Collage	16 x 16 ins				
24	Woods in May	Collage	16 x 16 ins				
25	Brushes and Paints II	Collage	16 x 16 ins				
26	Lilies and Poppies	Collage	16 x 16 ins				
27	Sweet Peas and Crocosmias	Collage	16 x 16 ins				
28	Moonlight Reflections	Collage	16 x 16 ins				
29	Two Sculptures in the Studio	Collage	16 x 16 ins				
30	Autumn	Collage	16 x 16 ins				
31	Birds on the Wing	Collage	16 x 16 ins				
32	Yellow Poppies	Collage	16 x 16 ins				
33	Fish at Sunset	Collage	13 x 13 ins				
34	The White Jug	Collage	12 x 12 ins				
35	Love in the Mist	Collage	9 x 12 ins				

E&OE

Image dimensions are in inches, height before width.

This catalogue features a selection of the works that are to be included in the exhibition.

Images of all the works to be featured may be viewed on our website [www.portlandgallery.com](http://www.portlandgallery.com)

Works are for sale prior to the opening of the exhibition; please refer to the enclosed price list.

## MARZIA COLONNA MRBS

Born Pisa

### Education

Art School, Pisa

The Accademia di Belle Arti (Sculpture)

Morley College (Printing)

### Solo Exhibitions and Commissions

2021 Sladers Yard, Bridport

2020 Portland Gallery, London

2018 Portland Gallery, London

Sculpture Exhibition, Chatsworth

2017 Commissioned trip to Bermuda for The West World Collection

2016 Portland Gallery, London

2015 Sladers Yard Bridport

2015 Commission of Earth and Sea, a large public bronze sculpture installed in Cracow, Poland

2014 Portland Gallery, London

2009 Installation of Kite Flyer in Parchment St, Winchester

2008 Selection and commission for life size figure for Winchester City Council

2007 Installation of Mermaid at Weymouth and Portland National Sailing Academy

2006 Installation of second St. Aldhelm in Sherbourne Abbey

Commission and installation of St. Aldhelm, Sherborne Abbey

2004 Hart Gallery, London, also 06, 08, 11

2003 Summerleaze Gallery, Wiltshire

2002 Installation of Crucifix in Salisbury Cathedral Chapel Gallery, Bath

1996 Grosvenor Gallery, London, also in 99

1992 Gillian Jason, London, also in 98 and 97

1985 Sanderson Gallery, London

1980 Campbell and Franks, London

1978 Galleria Macchi, Pisa

### Colonna Group Exhibitions

2018 The London Art Fair, Portland Gallery, London

2016 The London Art Fair, Portland Gallery, London

2014 The 20/21 British Art Fair, Portland Gallery, London

The London Art Fair, Portland Gallery, London

Dorset Now, Sladers Yard, Bridport

Open Air Sculpture, Knebworth House, Hertfordshire

2013 Gallery Artists, Browse and Darby, London

2013 The Jerram Gallery, Sherborne

2012 Christmas show, Browse and Darby, London

Sladers Yard, Bridport

2011 The Art House, Bournemouth

2010 20/21 British Art Fair, London

2009 Marshwood Vale exhibition (awarded first prize for sculpture and first prize for painting)

2008 Open Studios - DAWs, Portesham, Dorset

Trig, The Study Gallery of Modern Art

Bournemouth University Collection

2D to 3D, Bournemouth University Gallery

2007 Summer Exhibition, Hart Gallery, Nottingham, also in 08

2007 Chichester Festival

2006 Langham Fine Art, Bury St Edmunds

2005 London Art Fair, Islington, London, also in 06, 07 and 08

2004 Newby Hall, Yorkshire, also in 06, 07, 08 and 10

2004 ArtLondon, Chelsea, also in 05, 06 and 07

2004 Henley Festival

Eype Festival

2003 Burghley House, Norfolk

Broomhill Sculpture Garden, Devon

Town Mill Galleries, Lyme Regis, Dorset

2003 Dorset Art Week, also in 06, 10 and 12

2002 Stephen Lacey, London

Salisbury Festival - 'In Praise of TreesHouse Gallery, Dorset

2001 Bournemouth University Gallery

American Museum, Bath

2000 Shadows on Stone exhibition, Dorset

1999 Sausmarez Manor, Guernsey, also in 2000

1999 Sam Vacher Exhibition, Dorset

1998 New Art Centre, Salisbury, also in 1999

1998 Alpha House Gallery, Dorset, also in 2000, 04 and 07

1997 Summerleaze Gallery, Wiltshire, also in 2010

1995 Hannah Peschar Sculpture Garden, Surrey, also in 96,-2000, 06-08 and 2011

1990 Glydebourne Festival Gallery, Sussex, also in 91-93

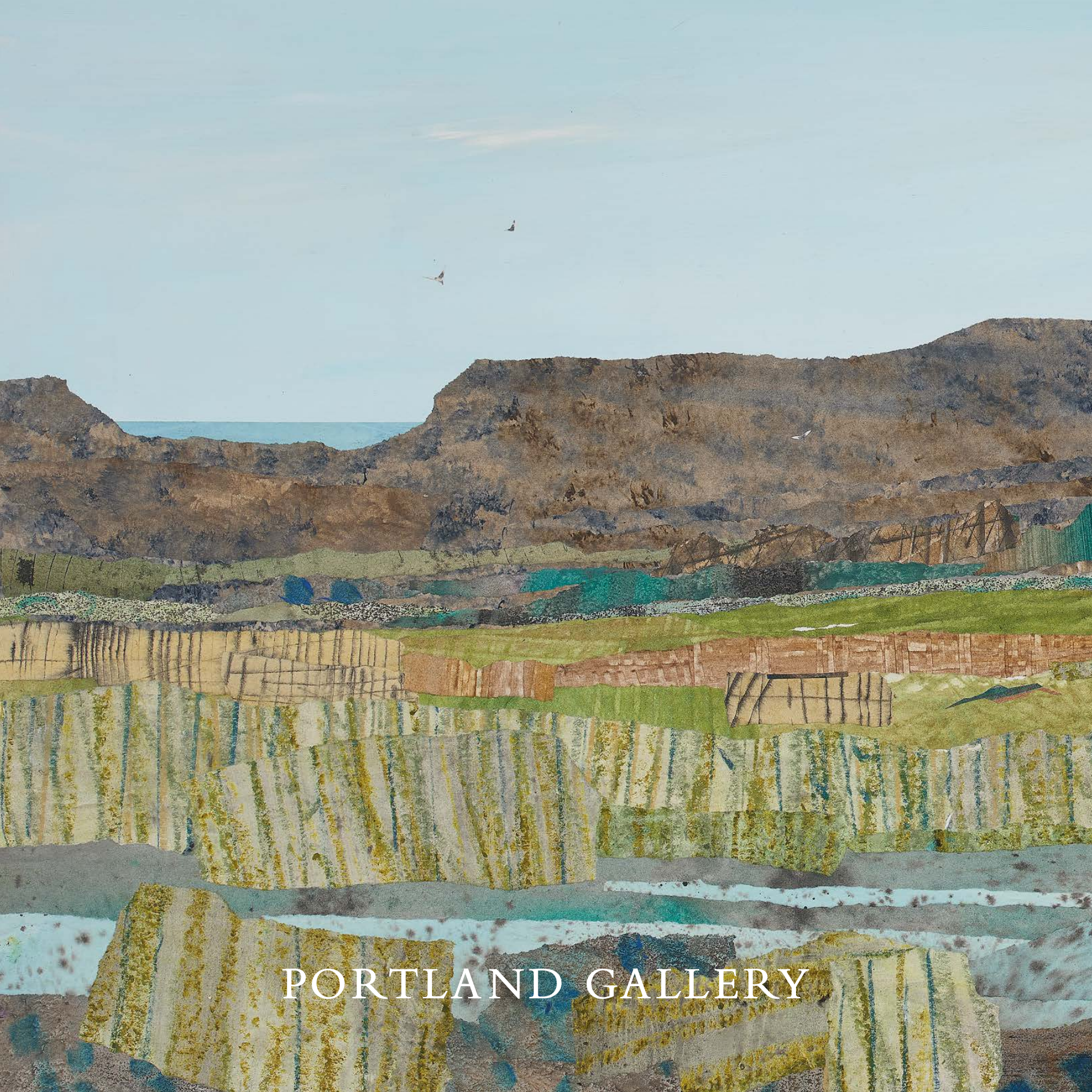
1989 Arthur Andersen, London

1984 The Studio, London

Christopher Hull, London

1977 Dusseldorf Gallery, Germany

1972 Upper Grosvenor Gallery, London



PORTLAND GALLERY