

MARTYN BREWSTER
RECENT WORKS

15 JUNE – 1 JULY 2022

Monday – Friday
10am – 6pm
and by appointment

PORTLAND GALLERY

3 BENNET STREET · LONDON SW1A 1RP
TELEPHONE 020 7493 1888 · EMAIL art@portlandgallery.com
www.portlandgallery.com

Cover: *Coastal Walk #5* Acrylic on canvas 80 x 80 cms Cat. no.25



Photo credit: xxxx

MARTYN BREWSTER INTRO

Martyn Brewster joined Portland Gallery in February 2022. Soon after arriving, he provided the gallery with a short statement about his work. In this brief introduction to his work, Jamie Anderson elaborates on Martyn's original notes with reference to his own experience of working with the artist over the last decade.

I make paintings, drawings and prints that are predominately about abstract or landscape themes, or in some cases a combination of the two.

In reality, all figurative paintings have abstract qualities, and all abstract paintings have their root in human experience. Whilst it is not always correct to seek representational elements in abstract art, in Martyn's case, these elements are rarely far from the surface. It is a quality that makes his art so alluring and engaging. As hinted by many of his titles, his art is a reaction to his experience of the natural world, and in particular the coastal environment of South Dorset.

Though I am mainly concerned with 'Colour' and 'Abstraction', I have never wanted to only make different colour variations of a particular compositional form or structure.

Over the 10 years I have worked with Martyn, and represented his art, certain motifs reoccur but their simplicity – the horizon line or the semi-circle 'boat form' for instance – never feel tired or worn because each time they are re-imagined and recontextualized. Indeed, viewing each new body of work adds to, rather than depletes, the collective experience. Perhaps that is why many of his collectors rarely stop at acquiring just one work.

Just as I have wanted to experiment with colour and explore every conceivable hue and shade so I have wanted to experiment with forms, shapes and compositions. I shy away from creating any kind of formula though inevitably works develop in series of similar ideas.

However good a catalogue is, and however well photographed the works are, Martyn's painting always surprises when viewed in person. His use of acrylic, often applied in thin glazes, creates a luminosity which is very hard to capture. In one predominantly blue painting there may be a myriad of shades and densities. Forms and textures emerge in viewing the paintings that are often overlooked in small reproductions. One could say that is the case with most art, but I feel it is especially true with Martyn's work.

I am drawn to the lyrical and poetic, the evocative and emotional, to beauty and music, to landscape and nature, to colour and light.

Martyn's love of music, and his description of his own work as lyrical, is very interesting. Some viewers struggle to connect with abstract art feeling that they cannot understand it. They may think they lack the language, or they rely on representational markers that are simply not there. These same viewers may, however, be perfectly at home listening to a passage of chamber music or a jazz track. Devoid of any lyrics – or representational markers – they still feel the emotion contained within the music. We do not need to know how a minor chord is constructed to understand it feels sad. The same feeling can be experienced with abstract art by avoiding any literal reading and allowing the mark making, colour and form to affect you on a very primal level. Martyn's painting is stirring, soothing and stimulating in equal measures, much like the music he admires and the landscape which inspires him.

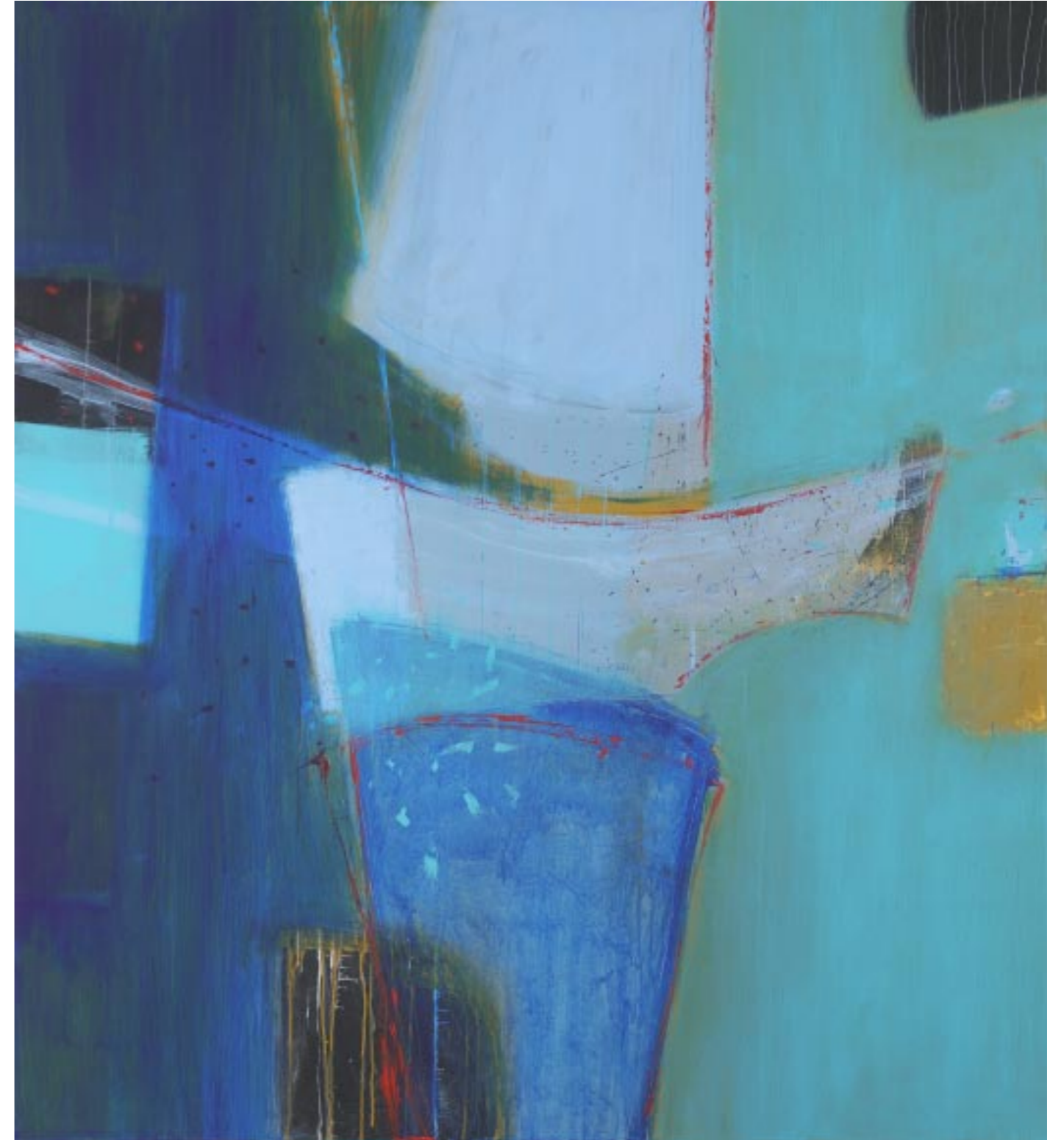


Winter Walking
Acrylic on canvas
135 x 120 cms

Catalogue no.2

Evening Shadows
Acrylic on canvas
150 x 135 cms

Catalogue no.1





Red Coast # 4
Acrylic on canvas
150 x 150 cms
Catalogue no.13



Penumbra
Acrylic on canvas
150 x 135 cms

Catalogue no.3

Red Horizon
Acrylic on canvas
150 x 120 cms

Catalogue no.4





Summer Light

Acrylic on canvas
50 x 50 cms

Catalogue no.8

Autumn Light

Acrylic on canvas
150 x 110 cms

Catalogue no.7





Winter Garden # 10

Acrylic on canvas
150 x 120 cms

Catalogue no.6

Blue Horizon

Acrylic on canvas
120 x 110 cms

Catalogue no.5



Shadows & Light # 7

Acrylic on canvas
90 x 80 cms

Catalogue no.11

Shadows & Light # 2 (study)

Acrylic on canvas
20 x 20 cms

Catalogue no.9

Shadows & Light # 3 (study)

Acrylic on canvas
20 x 20 cms

Catalogue no.10



Evening Glow

Acrylic on canvas
150 x 135 cms

Catalogue no.12

Night Blues

Acrylic on canvas
150 x 120 cms

Catalogue no.14





Radiant Light

Acrylic on canvas
150 x 135 cms

Catalogue no.15



Coastal Light 2013-36

Acrylic on canvas
50 x 100 cms

Catalogue no.16

Shadow & Light # 3

Acrylic on canvas
110 x 90 cms

Catalogue no.17



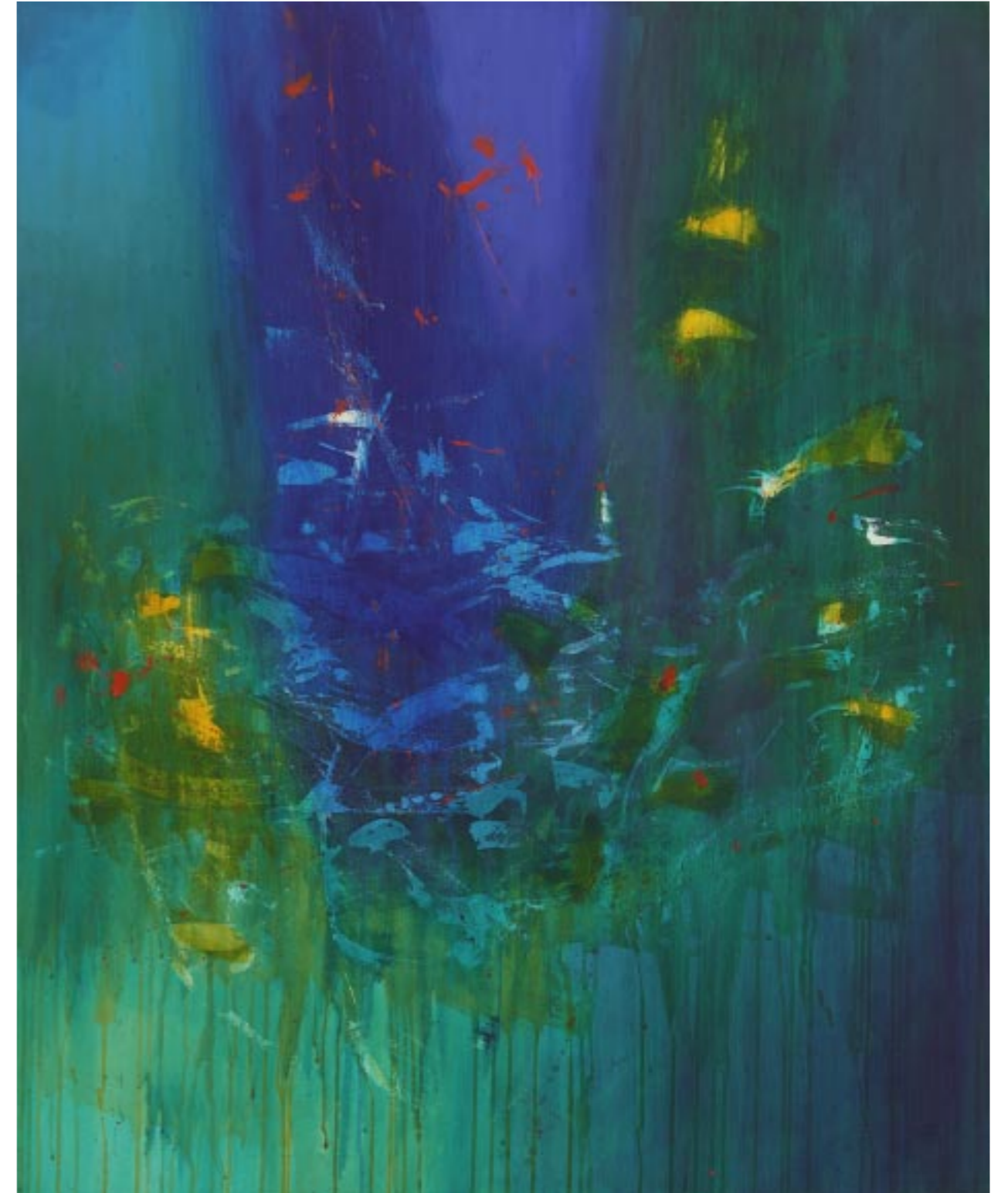


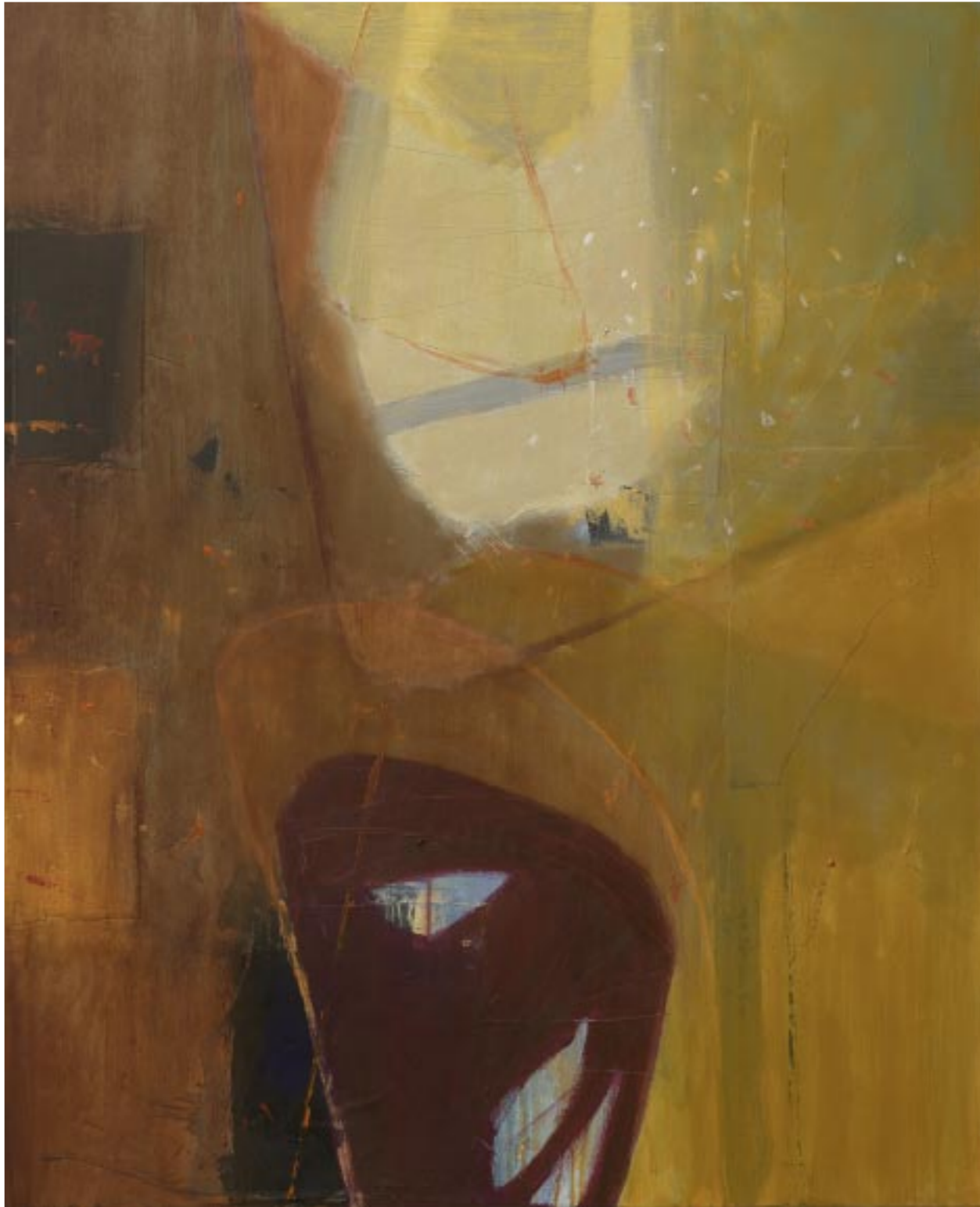
Evening Dance
Acrylic on canvas
80 x 60 cms

Catalogue no.18

Tropical Nights
Acrylic on canvas
110 x 90 cms

Catalogue no.19





Autumn Shadows

Acrylic on canvas
110 x 90 cms

Catalogue no.20

Nocturne

Acrylic on canvas
90 x 120 cms

Catalogue no.21





Counterpoint # 2

Acrylic on canvas
50 x 50 cms

Catalogue no.23



Night Echo

Acrylic on canvas
50 x 50 cms

Catalogue no.24

Counterpoint

Acrylic on canvas
90 x 90 cms

Catalogue no.22





Orange Shadow
Acrylic on canvas
80 x 80 cms
Catalogue no.26



Coastal Walk # 5
Acrylic on canvas
80 x 80 cms
Catalogue no.25



Fading Sunset
Acrylic on canvas
50 x 50 cms
Catalogue no.28



Coastal Light (Deep River)
Acrylic on canvas
198 x 91 cms
Catalogue no.27



Coastline # 4
Acrylic on canvas
90 x 90 cms

Catalogue no.29

Winter Coast # 4
Acrylic on canvas
120 x 90 cms

Catalogue no.30





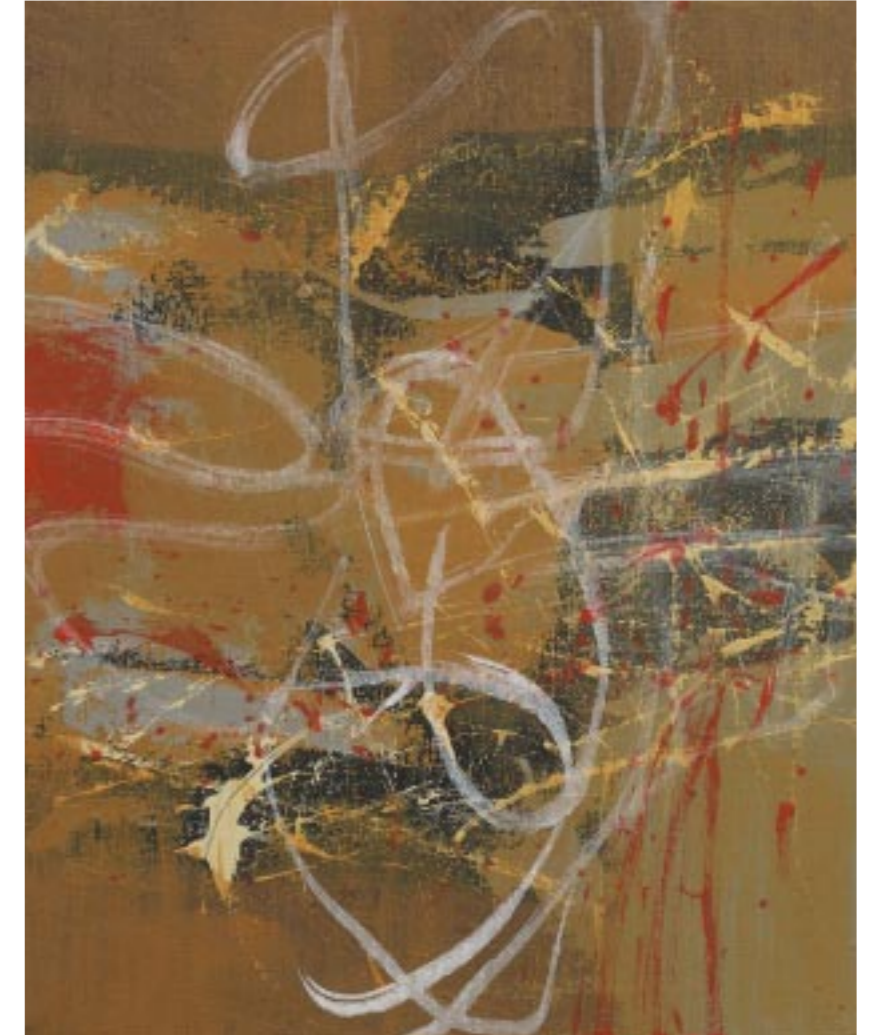
Lost Horizon
Acrylic on canvas
23 x 30 cms

Catalogue no.32



Storm Front # 2
Acrylic on canvas
23 x 30 cms

Catalogue no.32



Autumn Walk
Acrylic on canvas
30 x 24 cms

Catalogue no.31



Through the Woods

Acrylic on canvas
60 x 50 cms

Catalogue no.35



Coastal Walk # 6

Acrylic on canvas
90 x 120 cms

Catalogue no.34



Coastal Light # 152

Acrylic on canvas
60 x 30 cms

Catalogue no.39

Blue Waves

Acrylic on canvas
90 x 110 cms

Catalogue no.36





Shoreline # 2
Acrylic on canvas
40 x 50 cms
Catalogue no.40



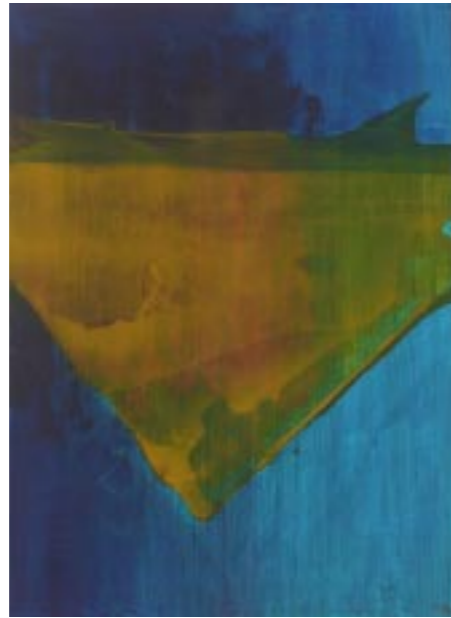
Winter Path
Acrylic on canvas
50 x 50 cms
Catalogue no.41



Study # 1

Acrylic on card
21 x 17 cms

Catalogue no.44



Study # 2

Acrylic on card
21 x 17 cms

Catalogue no.45



Autumn (study)

Acrylic on card
21 x 17 cms

Catalogue no.42



Autumn Sun (study)

Acrylic on card
21 x 17 cms

Catalogue no.43



Coastal Walk # 1 (study)

Acrylic on card
15 x 20 cms

Catalogue no.48

Study # 3

Acrylic on card
17 x 21 cms

Catalogue no.47



Shadow # 2 (study)

Acrylic on card
21 x 17 cms

Catalogue no.46



Evening Coast # 4

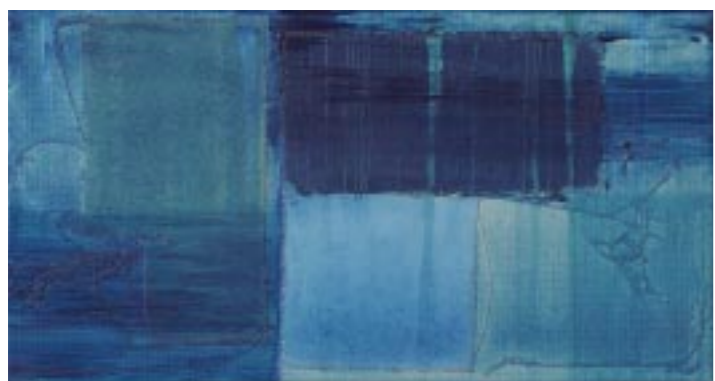
Acrylic on canvas
40 x 40 cms

Catalogue no.50

Early Evening

Acrylic on canvas
20 x 38 cms

Catalogue no.49



Coastal Light # 17

Acrylic on canvas
50 x 60 cms

Catalogue no.37



Coastline # 2

Acrylic on canvas
50 x 40 cms

Catalogue no.38



Coastline Day

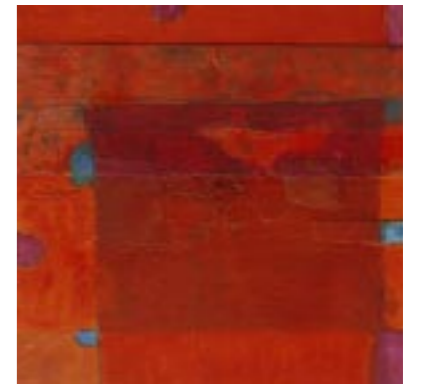
Carbundum print (ed. of 60)
41 x 59 cms

Catalogue no.52

Coastline Evening

Carbundum print (ed. of 60)
41 x 59 cms

Catalogue no.53



Blue Rooms

Acrylic on card
20 x 20 cms

Catalogue no.51

Red Rooms

Acrylic on card
20 x 20 cms

Catalogue no.54

MARTYN BREWSTER (born 1952, Oxford)

1970-71 Hertfordshire College of Art and Design
 1971-74 Brighton Polytechnic,
 BA Fine Art (Painting): first-class honours
 1974-75 Brighton Polytechnic,
 Postgrad Printmaking Diploma: distinction

Solo Solo Exhibitions

1977 Hertfordshire College of Art (two person)
 Watford Central Library Gallery, Hertfordshire
 1978 Christy's Art Gallery, Brighton
 1982 Harlow Playhouse Gallery, Essex
 Hornsey Library Gallery, London
 1983 Peterborough City Museum and Art Gallery
 Letchworth Museum and Art Gallery
 1984 Bury St Edmunds Art Gallery, Suffolk
 London College of Furniture
 1985 Brighton Polytechnic (two person)
 Wilmer Cutler and Pickering Law Associates, London
 1986 Minorities Art Gallery, Essex
 Warwick Arts Trust, London
 Winchester Gallery (touring exhibition)
 1987 Woodlands Art Gallery, London
 1988 'Shadows and Light' Thumb Gallery, London
 Bede Gallery, Jarrow
 1989 Thumb Gallery, London (two person)
 1990 'Light Falls' Thumb Gallery, London
 1992 Jill George Gallery, London
 1993 Upstairs Gallery, Upton Country Park, Dorset
 Pallant House Gallery, West Chichester
 Russell-Cotes Art Gallery and Museum, Dorset
 On Line Gallery, Southampton
 'New Works on Paper' Jill George Gallery, London
 1994 Contema Trichting, The Netherlands
 Dorset County Museum, Dorchester
 Jill George Gallery, London
 1995 'Monoprints from Lowick' Jill George Gallery, London
 1996 On Line Gallery, Southampton
 'Beauty and Sadness' Jill George Gallery, London
 1997 Coram Gallery, London
 1997 Russell-Cotes Art Gallery and Museum,
 Bournemouth (touring exhibition)
 'Monoprints from Lowick House' Jill George Gallery

1998 Quay Art Centre, Newport, Isle of Wight
 Pallant House Gallery, Chichester
 On Line Gallery, Southampton
 'Night Music' Jill George Gallery, London
 1999 Brighton University Art Gallery
 'Monoprints' Rubicon Gallery, Dublin
 Brighton Museum and Art Gallery
 'Monoprints' Jill George Gallery, London
 2000 Arts Institute at Bournemouth,
 Atrium Gallery, Bournemouth University
 'Nature Paintings' Jill George Gallery, London
 2001 Royal West of England Academy, Bristol
 University of Winchester
 'Monoprints' Jill George Gallery, London
 2002 'The Headland Series' Jill George Gallery, London
 2003 'Monoprints and Drawings' Jill George Gallery
 2004 The Study Gallery, Poole, Dorset
 Keller & Greene Gallery, Los Angeles, California
 'Heart Song' Jill George Gallery, London
 2005 'Monoprints' Jill George Gallery, London
 2006 Bettles Gallery, Hampshire
 Dorset Arts Weeks, Bournemouth
 'Landscape Paintings' Jill George Gallery, London
 2008 'Monoprints' (to accompany launch of book
 'Martyn Brewster - Prints 1975-2007')
 Jill George Gallery, London
 2009 Rabley Contemporary Drawing Centre, Wiltshire
 Jill George Gallery, London
 Bournemouth University
 2011 The Arthouse Gallery, Dorset
 2012 'Coastal Light' Waterhouse & Dodd, London
 2014 'Night Poetry' Waterhouse & Dodd, London
 2016 'Martyn Brewster: Ocean Light Seascapes 1990-2015,'
 Russell-Cotes Art Gallery & Museum, Bournemouth
 'Recent paintings & drawings' Waterhouse & Dodd,
 London
 2017 'Monoprints 1990-2010' Waterhouse & Dodd online
 2018 'Shadows & Light' Waterhouse & Dodd, London
 'Nocturnes' TheGallery, Arts University of Bournemouth
 2019 'Park Paintings' Waterhouse & Dodd, London
 2020 'Light & Harmony' Waterhouse & Dodd, New York

Selected Public and Corporate Collections

Arts Institute, Bournemouth
 Ashmolean Museum, Oxford
 Bede Gallery, Jarrow
 BMW (UK)
 Bournemouth University, Dorset
 British Museum, London
 BUPA
 Brighton Polytechnic
 Cable and Wireless plc
 Cambridge Institute of Education
 Capital Initiatives
 Central Japan Railway Co, Japan
 Christiana Bank, London
 Dell Computers, Ireland
 Dublin Institute of Technology, Ireland
 East Hertfordshire College, Chestnut
 Edwin Young Trust, Salisbury Museum
 Emory University, USA
 Epping Forest District Council
 First Interstate Bank of California
 Gartmore Investment Management
 IBM (UK)
 Kirkless Borough Council, Huddersfield Art Gallery
 Land Securities
 Lloyds TSB
 Logica Ltd
 London Borough of Tower Hamlets
 London Business School
 London College of Furniture
 Lowick House Print Workshop
 Merck, Sharp and Dohme
 Mezzanine Management
 Midland Bank plc
 National Trust
 NW Securities Bank
 Paintings in Hospitals
 Pallant House Gallery, Chichester
 Peterborough Art Gallery
 PIC Europe
 Poole Museums Service

Quay Arts Centre, Isle of White
 RNLI
 Royal West of England Academy
 Robert Horne and Co Ltd
 Russell-Cotes Art Gallery and Museum
 Standard Life
 Schroder Investment, London
 St Thomas' Hospital
 Sony Corporation
 Sumitomo Bank, London
 The Economist
 The Hepworth Wakefield
 The Open University
 Tolman Cunard
 Unilever plc
 Victoria and Albert Museum, London
 Vistakon, Ireland
 Warwick Arts Trust
 Wilmer, Cutler and Pickering
 Wiltshire County Council
 Winchester Health Authority
 Winchester School of Art

Literature

1997: Publication of monograph of life and work of Martyn
 Brewster to accompany travelling retrospective exhibition,
 by Simon Olding, Foreword by Mel Gooding.
 Published by Scholar Press
 2008: Publication of 'Martyn Brewster - Prints 1975-2007' by
 Vivienne Light and Simon Olding.
 Published by Canterton Books

