

RUTH STAGE: ADVENTURES IN LIGHT

24 APRIL - 9 MAY 2025

PRIVATE VIEW: WEDNESDAY 23RD APRIL, 6-8pm

PRESS RELEASE

For more information please contact:

Jasmine Winter

jasmine@portlandgallery.com

0207 493 1888

Portland Gallery is delighted to present over thirty expressive and atmospheric paintings by Ruth Stage. In her first presentation with the gallery, *Adventures in Light* celebrates the artist's interpretation of idyllic beaches, winding estuaries and urban parks, imbued with cascading light throughout.

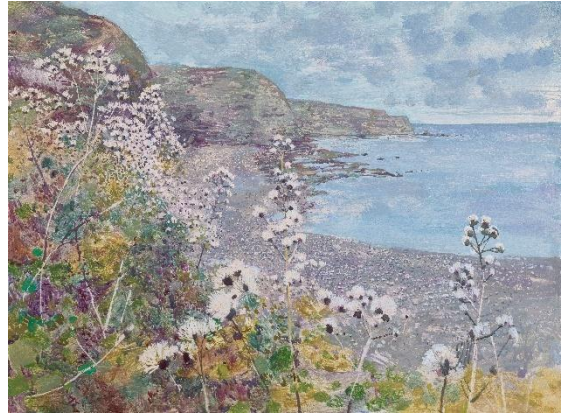


Paddle Boarder

Egg tempera and handmade gesso on panel, 80 x 104 cm

A myriad of locations, Stage is able to find inspiration wherever she travels; from Welsh beaches and Suffolk countryside to more tropical locations of Kefalonia and Italy. , she generates fluidity of light using egg tempera on white gesso board, emulating the glossy reflections of low tide or the glaze of a still riverbank. The chosen natural environments limit Stage's palette however, she uses this to her advantage. Soft, dusty pinks of sunset are contrasted by energetic whisps of bramble and wild hedgerows

in the foreground. Vivid skies and jewel-toned waters are created using pure pigment mixed with egg yolk, transforming everyday suburbia into fresh interpretations.



Auchmithie

Egg tempera and handmade gesso on panel, 45 x 60 cm

The composition of each work focuses on the quiet moments found in vast, all-consuming landscape. In paintings such as *Ionian Sea* and *Paddle Boarder*, Stage depicts distant figures, providing an idea of scale and a narrative to her chosen landscape. The smallest brushstroke can depict a lone dog-walker or brave swimmer. The peace and solace that can be found in Stage's works are consistent throughout her painting practice, and particularly in the pieces selected for this exhibition.



Moving Light, Richmond Park

Egg tempera and handmade gesso on panel, 100 x 122 cm

Artist Biography

Ruth Stage is a contemporary landscape painter, using egg tempera on white gesso to create fluidity of light, alongside varying patterns and textures. Stage sources images from parks and coastal areas and captures them using either a camera or sketchbook before putting brush to canvas.

Her BA was posted at Newcastle University, followed by a post graduate degree in painting at the Royal Academy where she graduated in 1995. After receiving many awards such as the Lynne Painter Stainer Prize (2013) and the David Messum Art Prize (2014), Ruth Stage is now based in South London where she works on her paintings.

- High resolution images are available on request
- Advanced viewings of artworks can be arranged on request
- The artist is available for interview
- An illustrated catalogue will support the exhibition

About Portland Gallery

Portland Gallery was established in 1984 and are leading dealers in Modern and Contemporary British Art. Located in St James's, the gallery is spread over two floors and plays host to fourteen exhibitions a year, principally solo presentations of represented artists and estate. The gallery is operated as an Employee Ownership Trust.