

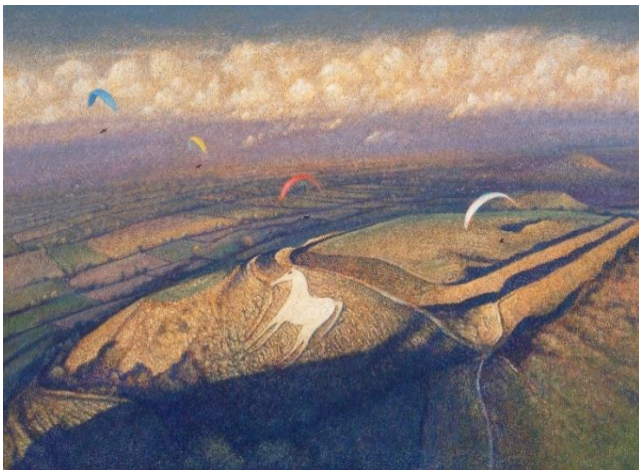
PORTLAND GALLERY ANOUNCE EXHIBITION OF WORKS BY JAMES LYNCH

James Lynch: Light as Dreams
26 September – 11 October 2024

For more information, contact Esme Dollow
esme@portlandgallery.com / 020 7493 1888

Over 25 paintings by contemporary artist James Lynch will be displayed in his first solo exhibition at Portland Gallery.

Lynch's works comprise of atmospheric scenes of the English landscape on both panel and paper, exploring the artist's personal experiences paragliding and walking through the Wessex countryside where he lives and works. Lynch places a great deal of care and time in capturing each scene as he remembers it. His delicate egg tempera paintings (created by careful layering of pigments onto various coloured grounds) capture the glow of sunlight and everchanging cloud formations across the land throughout the seasons with a wonderful drama and romantic quality.



Winter Flying over Westbury White Horse, egg tempera on gesso panel, 21 x 28 1/2 in.

Art historian, curator and lecturer David Boyd Haycock, (author of *A Crisis of Brilliance: Five Young British Artists and the Great War*, 2009) provides the introductory text to our accompanying printed catalogue. He reflects on Lynch's close connections with traditional technique and artistic inspiration, stating: 'Combining the old with the new, he adds something to the long line of English visionary painters with their love of light, and air, and the sudden bright fall of sunshine, or the sense of enduring mystery that's summed up by the tower atop Glastonbury Tor, or the glimpse of an Avebury megalith over trees, or the awe one feels at the sight of a vast white bank of clouds, or a vale filled with winter trees.'

Further inspiration is found within the writings of Edward Thomas (1878-1917), of which the exhibition title is based. It encapsulates Lynch's practice with a deeper poetic significance: evocative of his fascination with both the striking light of the day and the weightless sensation of flying, while bringing further life to the landscape Thomas so passionately wrote about.



Footpath Through the Orchard Underwood, egg tempera on gesso panel, 20 x 27 in.

We are thrilled to welcome Lynch to Portland Gallery's roster of represented artists, following his already established and celebrated career.

James Lynch: Light as Dreams will be on view at Portland Gallery from the 26th September – 11th October 2024. The gallery is open Monday – Friday, 10am – 6pm (or by appointment). All works in the exhibition are available to purchase.



After the Storm, egg tempera on gesso panel, 14 1/2 x 19 in

- High resolution images of works are available on request.
- Viewings of artworks can be arranged on request.
- A printed catalogue supports the exhibition.

PORTLAND GALLERY

3 BENNET STREET • LONDON SW1A 1RP

TELEPHONE 020 7493 1888 • EMAIL art@portlandgallery.com

www.portlandgallery.com