

ROMY ELLIOTT

PORTLAND GALLERY

26 SEPTEMBER - 11 OCTOBER 2024

Press Release

For more information please contact

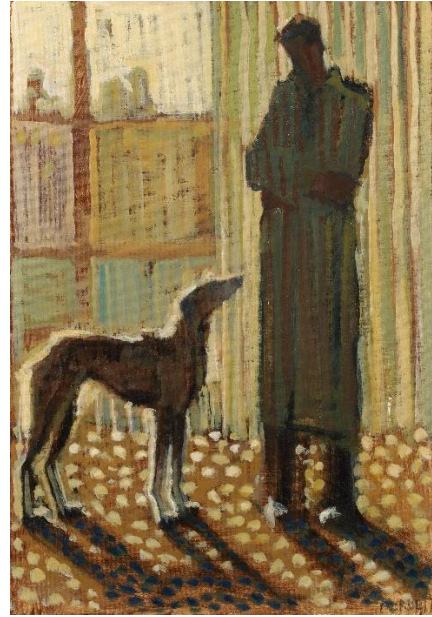
Jasmine Winter: jasmine@portlandgallery.com
0207 493 1888

Portland Gallery is delighted to present our first solo exhibition of Romy Elliott's paintings. We first met Romy over a year ago in her London studio, surrounded by an eclectic selection of studies, experiments and animal portraiture. We were instantly struck by Romy's talent and passion for capturing the relationship between animals and humans. Her draughtsmanship and exploration of anatomy, combined with her abstracted mark-making transform these everyday interactions into intimate observations of people and their horses or dogs, in a way that feels entirely contemporary.



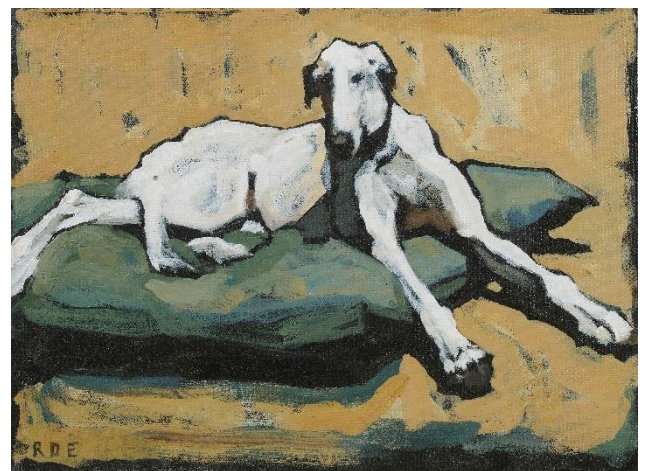
Cooling down with an audience - acrylic on canvas, 40 x 50cm

This first exhibition offers an insight into the accelerated development of Romy's artistic approach. At first glance many of the paintings appear stylistically at odds with one another - busier figurative scenes capturing the Palio di Siena in contrast to monochrome distillations of a man and rider, traditional compositions reminiscent of animal portraiture in contrast to bold colour experiments - but on closer inspection all the paintings are unified by the strong sense of connection between the animals and their human counterparts.



Backlit conversation - acrylic on board, 66 x 45 cm

Romy aims to find a balance between accurate portrayals and painterly abstraction - blurring lines, diluting edges and even restricting marks to the bare minimum. Her seemingly spontaneous handling of the paint comes from a background of great consideration and technical knowledge, evident in the accuracy of her final imagery. Romy's art historical influences are channelled through her paintings. Inclusion of distorted and often elongated figures feel reminiscent of Amedeo Modigliani, whilst her dynamic portraits of horses in motion emulate that of Alfred Munnings.



White Hound - acrylic on canvas, 30 x 40 cm

Artist Biography

Romy Elliott is a London based Contemporary painter. A graduate from the Florence Academy of Art, her anatomical depictions and observations of the unique and often unspoken bond between owner and dog have amassed a 22k+ following on Instagram.

Fascinated by anatomy and physiology, Romy's artworks are concerned with the interaction between people and animals - particularly horses and dogs. In her more recent paintings and drawings, Romy has acutely observed how handlers behave and work with animals in their care, using a reduced colour palette and broad gestural brush strokes. The paintings convey both the character and strength of the animals, but also the tender bond that can exist between them and their owners or handlers, an effect that is enhanced by Romy's use of plain or patterned backgrounds. We are delighted that Romy has joined our roster of artists at Portland.

- High resolution images are available on request
- Advanced viewings of artworks can be arranged on request
- The artists is available for interview
- An illustrated catalogue will support the exhibition



Romy Elliott in her Chelsea studio along with Piper and Fly, her own Labrador muses and studio assistants.
Image Courtesy of Georgina Preston

About Portland Gallery

Portland Gallery was established in 1984 and are leading dealers in modern and contemporary British Art. Located in St James's, the gallery is spread over two floors and plays host to 14 exhibitions a year, principally solo presentations of represented artists and estate. The gallery is operated as an Employee Ownership Trust.

PORTLAND GALLERY

3 BENNET STREET • LONDON SW1A 1RP

TELEPHONE 020 7493 1888 • EMAIL art@portlandgallery.com

www.portlandgallery.com