

# PORTLAND GALLERY

## NICK BOTTING: PRESENCE

9 – 31 MAY

### PRESS RELEASE

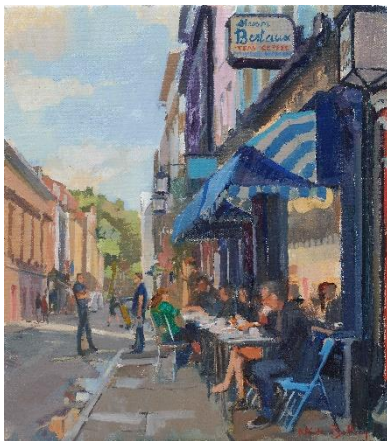
For more information please contact:

Florence Batchelor, [florence@portlandgallery.com](mailto:florence@portlandgallery.com), 0207 493 1888

Portland Gallery is delighted to announce an upcoming exhibition of recent paintings by Nick Botting. Botting has been exhibiting with Portland for over 20 years and is a firm favourite with collectors. Botting's paintings are painting stripped back to its bones – the subject and its painter – without any pretense or artifice. These paintings are the visual reaction of an artist responding to the fleeting world around him through the medium of paint on canvas. There is a rawness to sitting in front of a subject and making a painting about it which is grounding and immersive, and which speaks directly to anybody who is looking for a sense of reality and presence.



*Chapel Market, the tomato seller*



*Maison Bertaux, Monday Morning*

In a good landscape painting you should be able to tell the temperature and the time of day. So goes the old art dealers' saying, and it is one that is well worth bearing in mind with Nick Botting's pictures of London and the English seaside. When Botting sits in Soho on a summer morning, he paints the edge of the road wet because the street sweeper has been past and the road is still drying; he paints the handyman with a tin of paint and the worker with a sack barrow making deliveries because they were there and give an authentic narrative to the scene. Amused by the man eating a large cream cake he includes that vignette too. These little happenings make up a particular fleeting scene that comprise a morning in Soho, and their likeness was made by an artist who takes a lot of time to sit and watch and draw the world passing by in front of him.

Nick Botting paints in all seasons on beaches, in bars and restaurants, in theatres and on the streets. He draws and paints the people and places we are familiar with, and because he does it from life, the changing times are inevitably recorded too. In his painting 'The Screen on the Green, Nightfall' for example, we see the dramatic contrast between the old and the new London. There is the pastel glow in the sky of an early sunset broken by the neon lights of The Screen on the Green (one of the oldest cinemas in the UK having opened in 1913), while further down the street the warm interior of an Avoman shines out onto the pavement. The scene is populated by various characters - a woman in the act of dashing across the road, a couple arm-in-arm, and a mother looking at a poster - tiny contributions to the history of things in this corner of London. These paintings are full of small observations like these which tell us a little about our being here.



*The Screen on the Green, Nightfall*

## ARTIST BIOGRAPHY

Nick Botting (b. 1963)

Nick Botting's has an instinctive ability to capture in paint the atmosphere of his subject: from the bars and theatres of London to the beaches of Cornwall. Direct experience and careful observation are important themes throughout his work. He makes a point of painting directly from the subject rather than depending on references, for this establishes a spontaneity and sense of genuine experience that is often lost in the studio.

As well as paintings of particular places Nick has accepted a variety of commissions including:

- The first F.A. Cup Final at the new Wembley Stadium for the Football Association
- Official Artist for the MCC tour of Pakistan, 2001 (including portraits of Queen Elizabeth II and Ian Botham, held in Lord's Collection)
- The Queen's Diamond Jubilee Flotilla on the River Thames (held at Hatfield House), 2012



- High resolution images are available on request
- Advanced viewings of artworks can be arranged on request
- The artist is available for interview
- An illustrated catalogue will support the exhibition

## ABOUT PORTLAND GALLERY

Portland Gallery was established in 1984 and are leading dealers in modern and contemporary British Art. Located in St James's, the gallery is spread over two floors and plays host to 14 exhibitions a year, principally solo presentations of represented artists and estate. The gallery is operated as an Employee Ownership Trust.