

GORDON MITCHELL: NEW PAINTINGS

27 MARCH – 12 APRIL 2024

Press Release

For more information, please contact:

Jasmine Winter

jasmine@portlandgallery.com

020 7943 1888

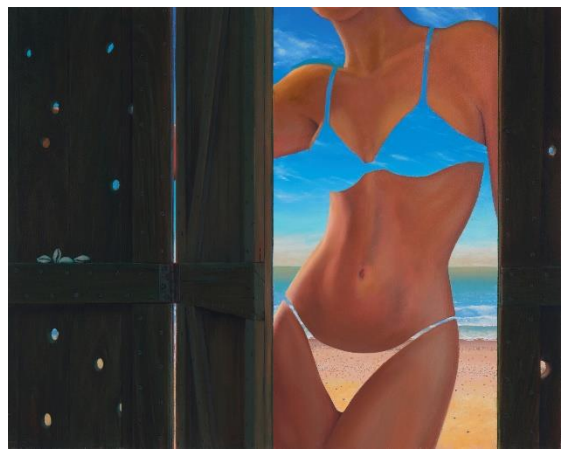
Portland Gallery is delighted to present over fifty witty and inventive paintings by Gordon Mitchell. Recalling objects and landscapes using his photographic memory, this body of works depicts still lifes, human figures and animals set against fictitious and often deliberately simple backdrops.



Twenty One, oil on canvas, 36 x 40 inches

Human figures and nudes feature strongly in a number of Mitchell's paintings. Although reimagined (for instance) in the carving of a pear or apple, these nudes are reminiscent of classical marble sculpture, creating a dialogue between art history and fantasy. Faces and figures can also be found in the cracks of a wall or the peeling paint of a weathered shutter.

Mitchell's exceptional skill as a draftsman and his ability to recall minute detail means his depictions of subjects such as birds, the female form and assorted fruits and vegetables, feel lifelike and tangible in spite of their imagined and law-defying settings. In paintings such as *Twenty One* and *Evening of Wonder*, inanimate objects appear to float through the sky in a surreal yet convincing way.



Two Piece, oil on canvas, 24 x 30 inches

A key element in all of Mitchell's work is humour. The artist looks for the fun in the ordinary and is able to encompass this in his painting. Double entendre and witty puns are used to title each carefully considered scene. The titles themselves are an extension of the artworks, as they give cryptic hints to Mitchell's often obscured subject matter. The intellectual charm of Mitchell's work is consistent throughout his painting practice, and particularly in the works selected for this exhibition.



Big American Cousin, oil on canvas, 12 x 16 inches

Artist Biography

Gordon Mitchell RSA RSW RGI (b.1952)

Gordon Mitchell is a contemporary artist based in Edinburgh, Scotland. Relying on his photographic memory, Mitchell creates sumptuous landscapes with surreal elements that both challenge and humour the viewer. The influence of René Magritte is evident; dream-like landscapes with floating motifs and hidden figures transform the everyday into logic-defying scenes of wonder.

Born in 1952, Mitchell later went on to study at Edinburgh College of Art (1970 – 1974). He then embarked on a career as a teacher until becoming a full time painter in 1989. Since being an artist, Gordon has exhibited in multiple group and solo exhibitions across the United Kingdom; he has been exhibiting with Portland Gallery for over fifteen years. A number of his paintings are held in major collections including the Scottish Arts Council, Royal Bank of Scotland and the University of Edinburgh. Mitchell is also an elected a member of the Royal Society of Painters in Watercolour (1997), the Royal Glasgow Institute (1998) and the Royal Scottish Academy (2005).

- High resolution images are available on request
- Advanced viewings of artworks can be arranged on request
- The artist is available for interview
- An illustrated catalogue will support the exhibition

About Portland Gallery

Portland Gallery was established in 1984 and are leading dealers in Modern and Contemporary British Art. Located in St James's, the gallery is spread over two floors and plays host to fourteen exhibitions a year, principally solo presentations of represented artists and estate. The gallery is operated as an Employee Ownership Trust.

PORTLAND GALLERY

3 BENNET STREET • LONDON SW1A 1RP
TELEPHONE 020 7493 1888 • EMAIL art@portlandgallery.com
www.portlandgallery.com